

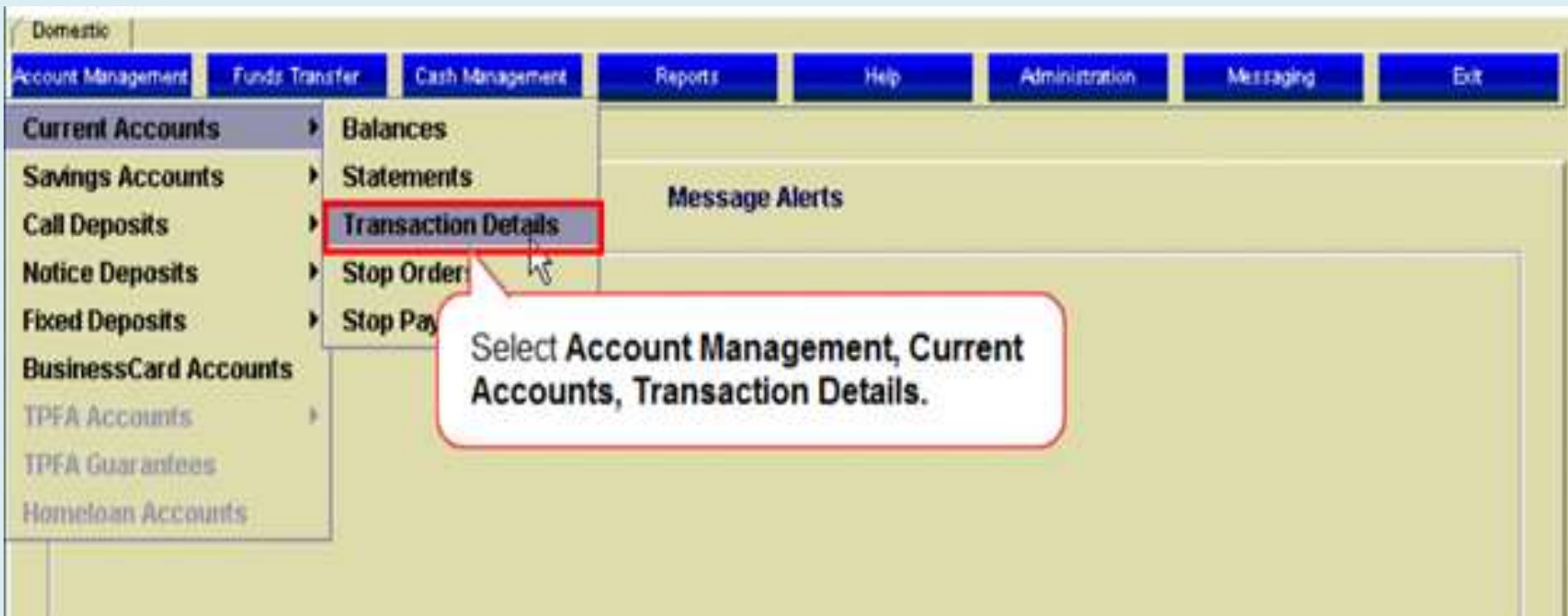
Standard Bank - Business



SmartBank

Internet Bank Statement History
Download Guide

Select “Account Management, Current Accounts, Transaction Details”



Select “All Transactions”

Domestic

Account Management | Funds Transfer | Cash Management | Reports | Help | Administration | Messaging | Exit

Message Alerts | Current Account - Transaction Details

Current Account - Transaction Details Request

Transactions available from Request no

Transaction

Debits

Credits

All

Display Sequence

Date Narrative

Transaction Code & Cheque No. Amount

Opening and closing balances

Selection criteria

Item description/s

- ALL TRANSACTIONS
- ACB TRANSACTIONS
- BANK CHARGES
- CATS BILLING
- BILLS
- CATS TRANSACTIONS

Date from to

Statement no from to

Cheque no from to

Amount from to

	Br	Branch Name	Account No	Account Name
1			24564	JOHNDOE CC
2			24664	PRECAST FLOOR
3	100862	NORTHGATE	10003524764	JOE SOAP
4	100862	NORTHGATE	10003524864	NEW VISION
5	100862	NORTHGATE	10003524964	EAGLE NEST CC
6	100862	NORTHGATE	10003525064	BLK DISTRIBUTORS
7	100862	NORTHGATE	10003525164	ELMA TRUST

Select All Transaction.

Select the "Account"

Domestic

Account Management Funds Transfer Cash Management Reports Help Administration Messaging Exit

Message Alerts Current Account - Transaction Details

Current Account - Transaction Details Request

Transactions available from 20080325 Request no

Transaction
 Debits
 Credits
 All

Display Sequence
 Date
 Narrative
 Transaction Code & Cheque No.
 Amount

Opening and closing balances

Selection criteria

Item description/s
ALL TRANSACTIONS
ACB TRANSACTIONS
BANK CHARGES
CATS BILLING
BILLS
CATS TRANSACTIONS

Date from 20080901 to 20080930

Statement no from to
Cheque no from to
Amount from to

#	Branch	Branch Name	Account No	Account Name
1	100862	NORTHGATE	10003524564	JOHNDOE CC
2	100862	NORTHGATE	10003524664	PRECAST FLOOR
3	100862	NORTHGATE		
4	100862	NORTHGATE		
5	100862	NORTHGATE		CC
6	100862	NORTHGATE	10003525064	BLK DISTRIBUTORS
7	100862	NORTHGATE	10003525164	ELMA TRUST

Select the account.

Select the “Date from and to”

Domestic

Account Management Funds Transfer Cash Management Reports Help Administration Messaging Exit

Message Alerts Current Account - Transaction Details

Current Account - Transaction Details Request

Transactions available from Request no

Transaction
 Debits
 Credits
 All

Display Sequence
 Date Narrative
 Transaction Code Amount & Cheque No.

Opening and closing balances

Selection criteria

Item description/s
ALL TRANSACTIONS
ACB TRANSACTIONS
BANK CHARGES
CATS BILLING
BILLS
CATS TRANSACTIONS

#	Branch	Branch Name	Account No	Account Name
1	100862	NORTHGATE	10003524564	JOHNDOE CC
2	100862	NORTHGATE	10003524664	PRECAST FLOOR
3	100862	NORTHGATE	10003524764	JOE SOAP
4	100862	NORTHGATE	10003524864	NEW VISION
5	100862	NORTHGATE	10003524964	EAGLE NEST CC
6	100862	NORTHGATE	10003525064	BLK DISTRIBUTORS
7	100862	NORTHGATE	10003525164	ELMA TRUST

Date from **to**

Statement no from

Select the **Date from and to**.

Click "OK"

Domestic

Account Management | Funds Transfer | Cash Management | Reports | Help | Administration | Messaging | Exit

Message Alerts | Current Account - Transaction Details

Current Account - Transaction Details Request

Transactions available from Request no

Transaction
 Debits
 Credits
 All

Display Sequence
 Date
 Narrative
 Transaction Code
 Amount
& Cheque No.

Opening and closing balances

Selection criteria

Item description/s
ALL TRANSACTIONS
ACB TRANSACTIONS
BANK CHARGES
CATS BILLING
BILLS
CATS TRANSACTIONS

Date from to

Statement no from to

Cheque to

Amount to

#	Branch	Branch Name	Account No	Account Name
1	100862	NORTHGATE	10003524564	JOHNDOE CC
2	100862	NORTHGATE	10003524664	PRECAST FLOOR
3	100862	NORTHGATE	10003524764	JOE SOAP
4	100862	NORTHGATE	10003524864	NEW VISION
5	100862	NORTHGATE	10003524964	EAGLE NEST CC
6	100862	NORTHGATE	10003525064	BLK DISTRIBUTORS
7	100862	NORTHGATE	10003525164	ELMA TRUST

Click OK.

OK

Click on “Export”

The screenshot displays a banking application window titled "Current Account - Transaction Details". The interface includes a navigation bar at the top with buttons for "Account Management", "Funds Transfer", "Cash Management", "Reports", "Help", "Administration", "Messaging", and "Exit". Below this, there are tabs for "Message Alerts" and "Current Account - Transaction Details".

The main content area shows the following details:

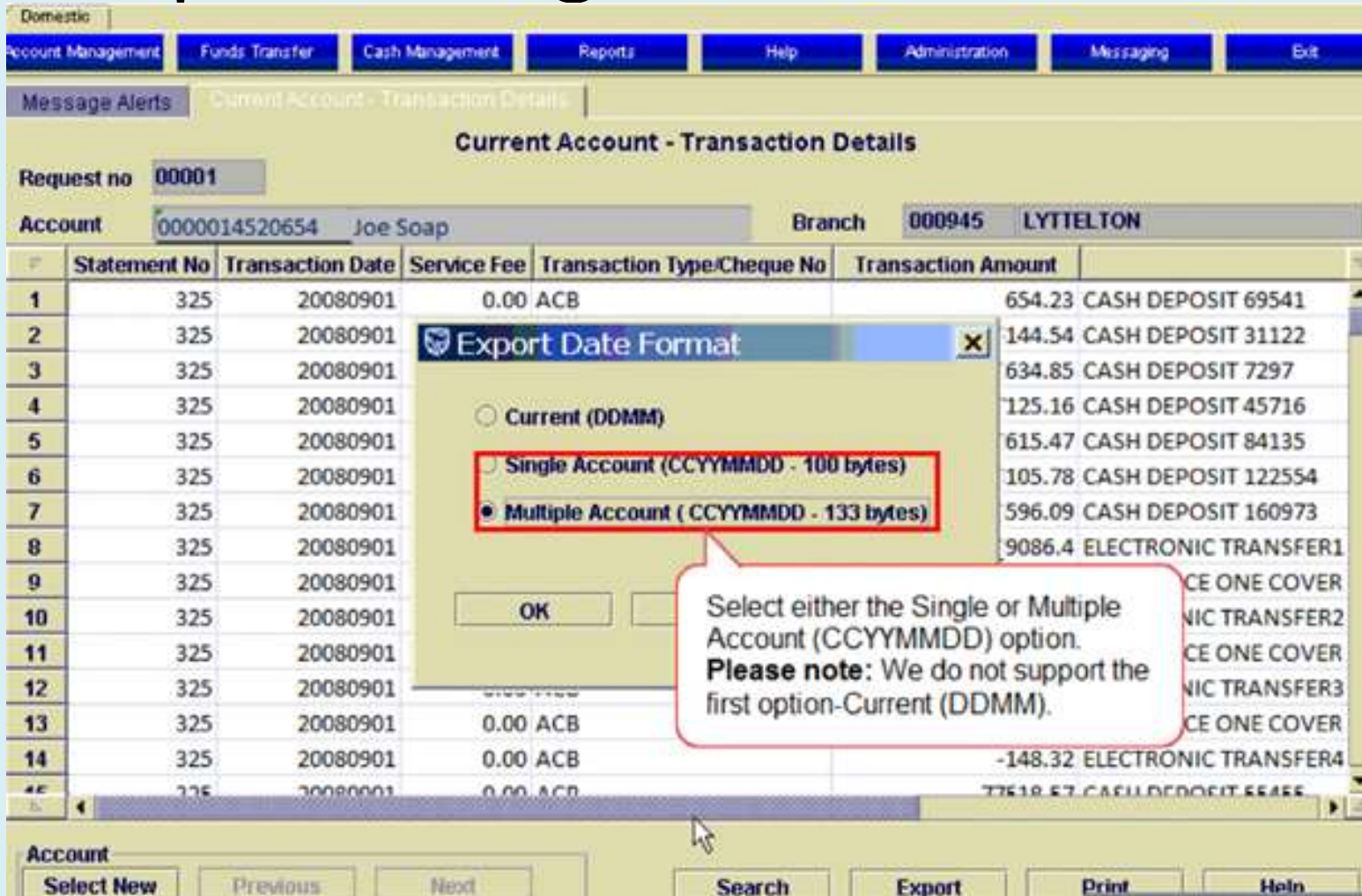
- Request no: 00001
- Account: 0000014520654 Joe Soap
- Branch: 000945 LYTELTON

A table of transactions is displayed with the following columns: P, Statement No, Transaction Date, Service Fee, Transaction Type/Cheque No, and Transaction Amount. The table contains 14 rows of data, with the last row partially obscured by a scroll bar.

At the bottom of the window, there is a navigation bar with buttons for "Select New", "Previous", "Next", "Search", "Export", "Print", and "Help". The "Export" button is highlighted with a red box, and a red callout bubble with the text "Click on Export." points to it.

P	Statement No	Transaction Date	Service Fee	Transaction Type/Cheque No	Transaction Amount
1	325	20080901	0.00	ACB	654.23 CASH DEPOSIT 69541
2	325	20080901	0.00	ACB	6144.54 CASH DEPOSIT 31122
3	325	20080901	0.00	ACB	-11634.85 CASH DEPOSIT 7297
4	325	20080901	0.00	ACB	17125.16 CASH DEPOSIT 45716
5	325	20080901	0.00	ACB	22615.47 CASH DEPOSIT 84135
6	325	20080901	0.00	ACB	28105.78 CASH DEPOSIT 122554
7	325	20080901	0.00	ACB	33596.09 CASH DEPOSIT 160973
8	325	20080901	0.00	ACB	39086.4 ELECTRONIC TRANSFER1
9	325	20080901	0.00	ACB	-44576.71 INSURANCE ONE COVER
10	325	20080901	0.00	ACB	50067.02 ELECTRONIC TRANSFER2
11	325	20080901	0.00	ACB	-55557.33 INSURANCE ONE COVER
12	325	20080901	0.00	ACB	61047.64 ELECTRONIC TRANSFER3
13	325	20080901	0.00	ACB	66537.95 INSURANCE ONE COVER
14	325	20080901	0.00	ACB	-148.32 ELECTRONIC TRANSFER4
15	325	20080901	0.00	ACB	77518.57 CASH DEPOSIT 55455

Select either **Single** or **Multiple Account** option using **CCYYMMDD ONLY!**



Domestic

Account Management Funds Transfer Cash Management Reports Help Administration Messaging Exit

Message Alerts Current Account - Transaction Details

Current Account - Transaction Details

Request no 00001

Account 0000014520654 Joe Soap Branch 000945 LYTTELTON

#	Statement No	Transaction Date	Service Fee	Transaction Type/Cheque No	Transaction Amount
1	325	20080901	0.00	ACB	654.23 CASH DEPOSIT 69541
2	325	20080901			144.54 CASH DEPOSIT 31122
3	325	20080901			634.85 CASH DEPOSIT 7297
4	325	20080901			125.16 CASH DEPOSIT 45716
5	325	20080901			615.47 CASH DEPOSIT 84135
6	325	20080901			105.78 CASH DEPOSIT 122554
7	325	20080901			596.09 CASH DEPOSIT 160973
8	325	20080901			9086.4 ELECTRONIC TRANSFER1
9	325	20080901			CE ONE COVER
10	325	20080901			NIC TRANSFER2
11	325	20080901			CE ONE COVER
12	325	20080901			NIC TRANSFER3
13	325	20080901	0.00	ACB	CE ONE COVER
14	325	20080901	0.00	ACB	-148.32 ELECTRONIC TRANSFER4
15	325	20080901	0.00	ACB	77518.57 CASH DEPOSIT 55455

Account Select New Previous Next Search Export Print Help

Click "OK" re Export Date Format

Domestic

Account Management Funds Transfer Cash Management Reports Help Administration Messaging Exit

Message Alerts Current Account - Transaction Details

Current Account - Transaction Details

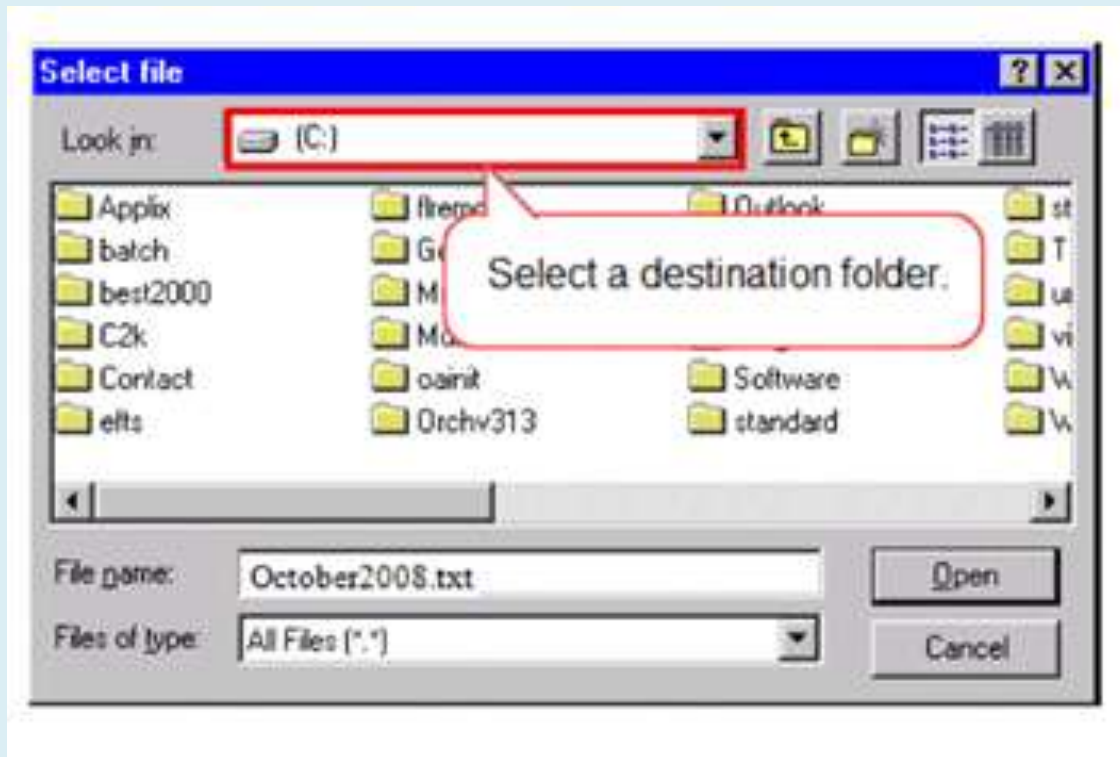
Request no 00001

Account 0000014520654 Joe Soap Branch 000945 LYTTELTON

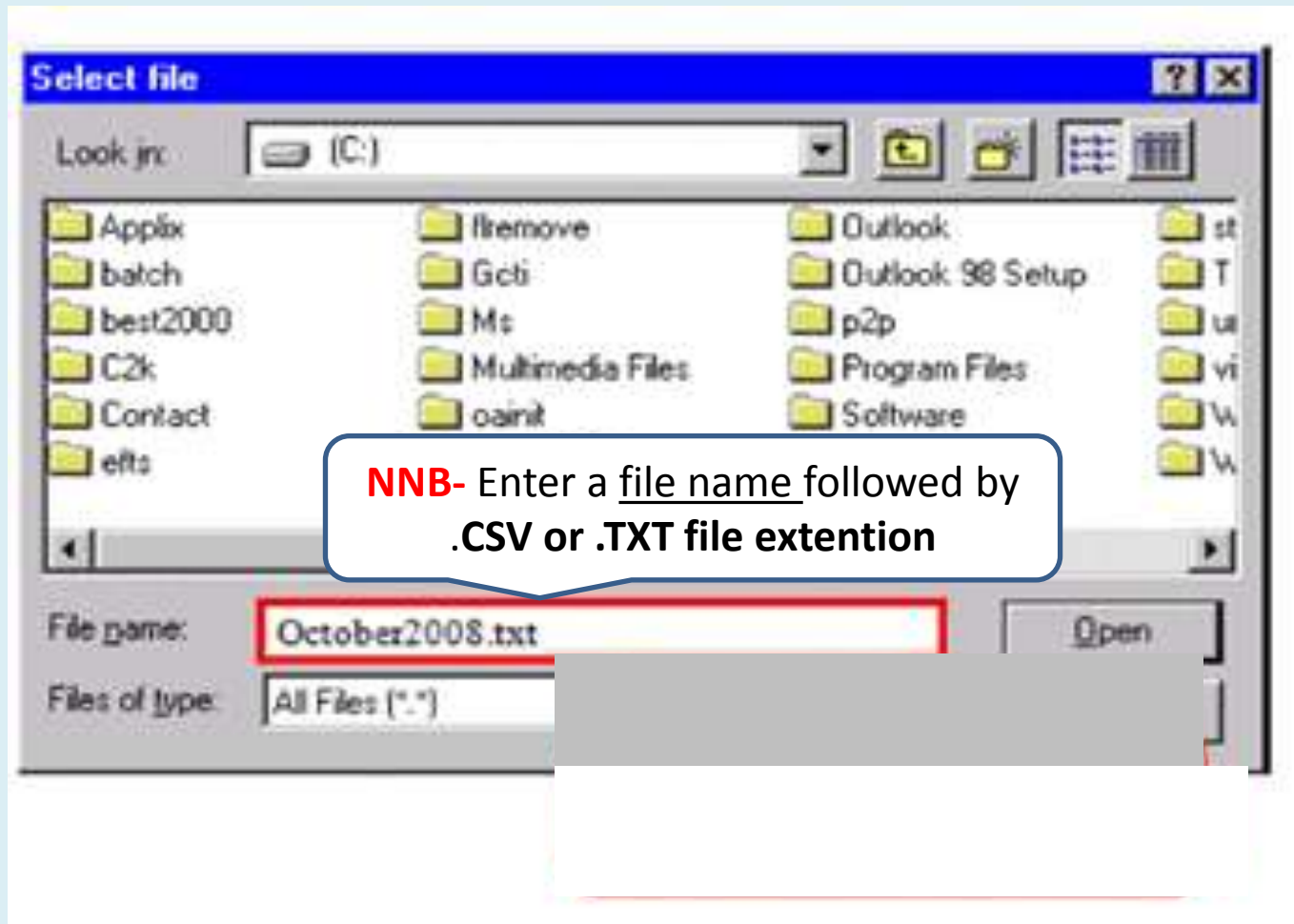
#	Statement No	Transaction Date	Service Fee	Transaction Type/Cheque No	Transaction Amount
1	325	20080901	0.00	ACB	654.23 CASH DEPOSIT 69541
2	325	20080901			144.54 CASH DEPOSIT 31122
3	325	20080901			634.85 CASH DEPOSIT 7297
4	325	20080901			125.16 CASH DEPOSIT 45716
5	325	20080901			615.47 CASH DEPOSIT 84135
6	325	20080901			105.78 CASH DEPOSIT 122554
7	325	20080901			596.09 CASH DEPOSIT 160973
8	325	20080901			9086.4 ELECTRONIC TRANSFER1
9	325	20080901			576.71 INSURANCE ONE COVER
10	325	20080901			067.02 ELECTRONIC TRANSFER2
11	325	20080901			557.33 INSURANCE ONE COVER
12	325	20080901			1047.64 ELECTRONIC TRANSFER3
13	325	20080901	0.00		66537.95 INSURANCE ONE COVER
14	325	20080901	0.00	ACB	-148.32 ELECTRONIC TRANSFER4
15	325	20080901	0.00	ACB	77518.57 CASH DEPOSIT 55455

Account Select New Previous Next Search Export Print Help

Selection a destination folder



Assign a file name followed by **OFX/OFC or CSV if available)**



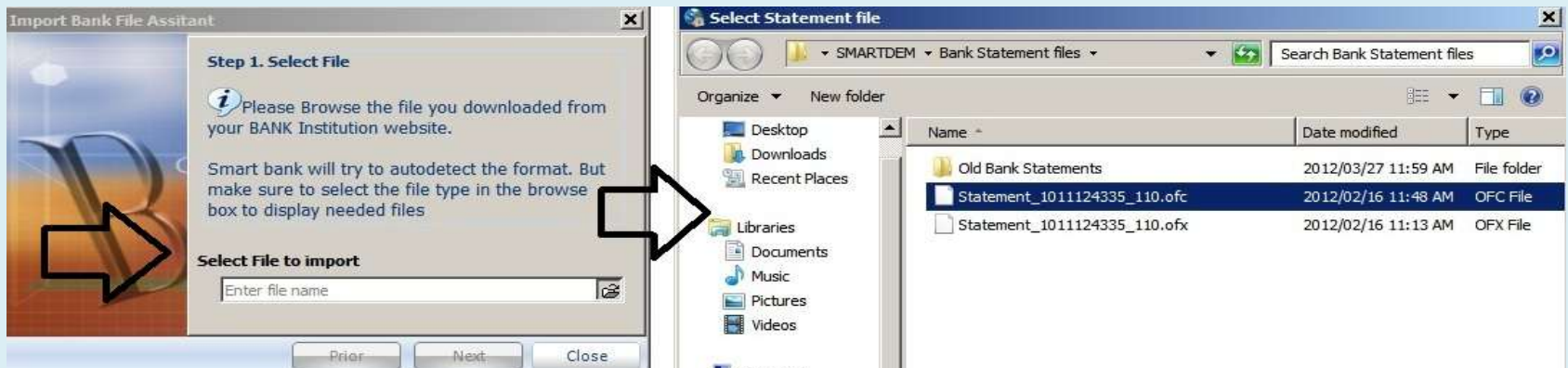
“Successfully Exported” box will conform download is complete



Then import the Internet Banking file into SmartBank



Let SmartBank walk you through how to select, preview and then import your downloaded bank statement file



Summary of RECOMMENDED Bank Statement Download files using SmartBank

SmartBank compatible bank account download files				
FNB - Business / Personal				
	OFC	OFX	CSV	
- Transactions - Business	Y	Y	Y	
- Transactions - Personal / Small Business	Y	Y	Soon	
- Recreated	NA	Y	Y	
- Interim	N	N	N	
- Credit card / Discovery	Y	Y	Y	
FNB accessible "Transaction history" is ONLY available for between 2 to 3 MONTHS				
Nedbank - Business / Personal				
	OFC	OFX	CSV	
- NedBank - Personal / Small Business	N	N	Y	
- Nedbank - Business - SA	Y	N	Y	
- Nedbank - Business - Namibia	N	N	Y	
- NedBank - Credit card	N	N	Y	
Nedbank accessible "Transaction history" is only available for between 2.5 to 3 YEARS				
Standard Bank				
	OFC	OFX	CSV	TEXT
- Standard Bank - Personal / Small Business	NA	Y	Y	
- Standard Bank - Business Online / Catz	NA	NA	Y	Y
- Standard Bank - Credit Card	NA	Y	Y	
Standard Bank accessible "Transaction history" is ONLY available to 6 MONTHS				
ABSA				
	OFC	OFX	CSV	
- ABSA - Business / Personal	Y	N	Y	Note 1
ABSA Bank accessible "Transaction history" is ONLY available for between 2 to 3 MONTHS				
Note 1 - ABSA CSV works BUT does NOT have an account number, which then will have to be 1) manually entered and 2) matched with the correct bank account				
Investec				
	OFC	OFX	CSV	
- Investec	NA	N	Y	
Investec Bank accessible "Transaction history" is ONLY available for between 2 to 3 MONTHS				
Capitec				
	OFC	OFX-2	CSV	
- Personal Accounts	N	Y	N	
Capitec Bank accessible "Transaction history" is ONLY available for between 2 to 3 MONTHS				